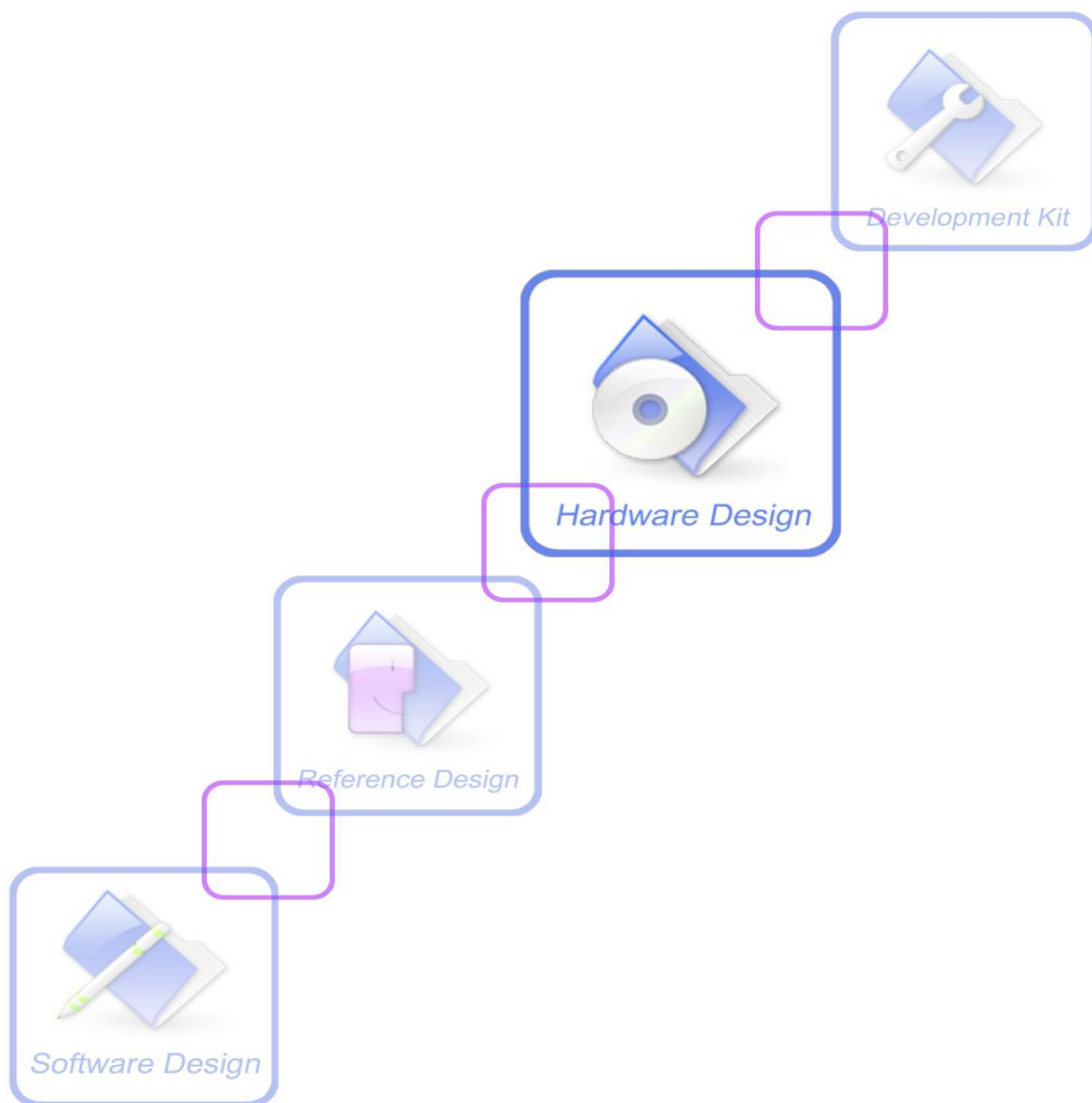




A company of SIM Tech

SIM800H EAT FW Download Tool_V1.04_User Guide



Contents

1	USB download.....	3
1.1	Preparation.....	3
1.2	Download Tool Setting:.....	3
1.3	Image Folder.....	4
1.4	Start download.....	5
2	UART download	7
2.1	Preparation.....	7
2.2	Download Tool Setting:.....	7
2.3	Image Folder.....	9
2.4	Start download.....	10

SIMCOM CONFIDENTIAL FILE

1 USB download

1.1 Preparation

1. If you upgrade module FW using SIM800H EVB board, connect the USB port which is on SIM800H_TE board to your computer by **USB** cable. Insert the power DC.
2. Install USB Driver” MTK_USB_DRIVER”.

1.2 Download Tool Setting:

Double click () to open the download tool, you can see the interface as below:

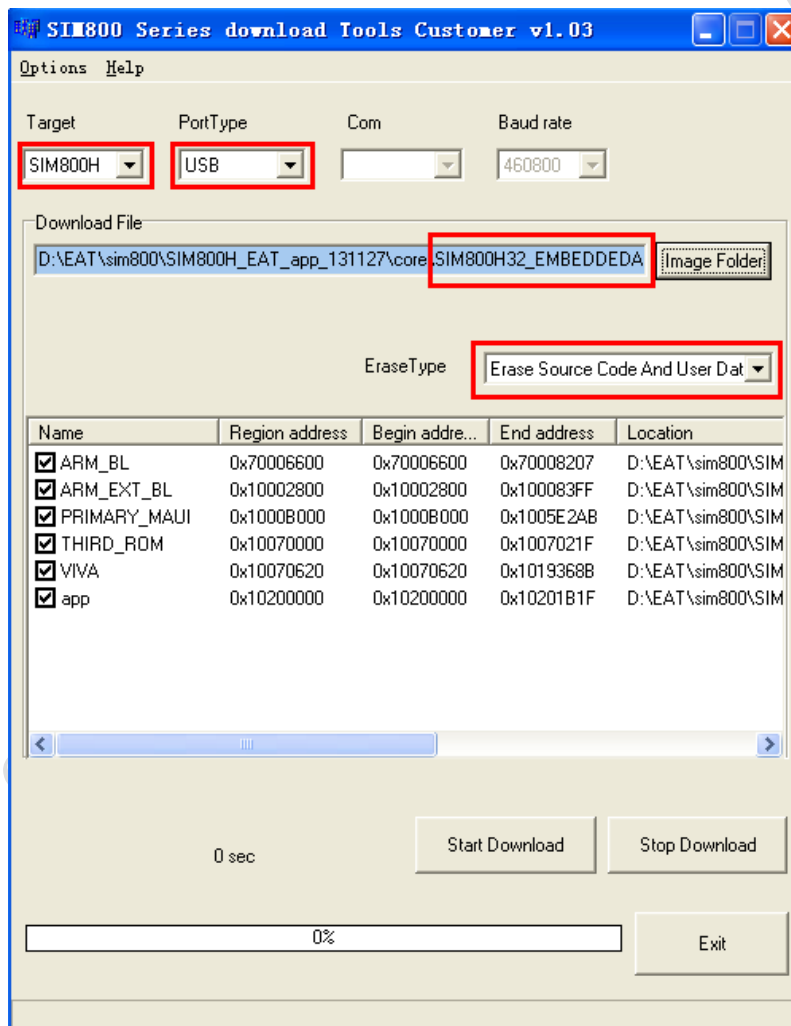


Figure 1

Target : module identification; please choose “**SIM800H**”

PortType: USB download or UART download; please choose “**USB**”

Com: do not choose;

Baud rate: do not choose;

Erase Type: please choose Erase source code and user data (default).

1.3 Image Folder

The main difference between standard and EAT version is that EAT version has two kinds of software package. One is only core file; another one with core file and app file.

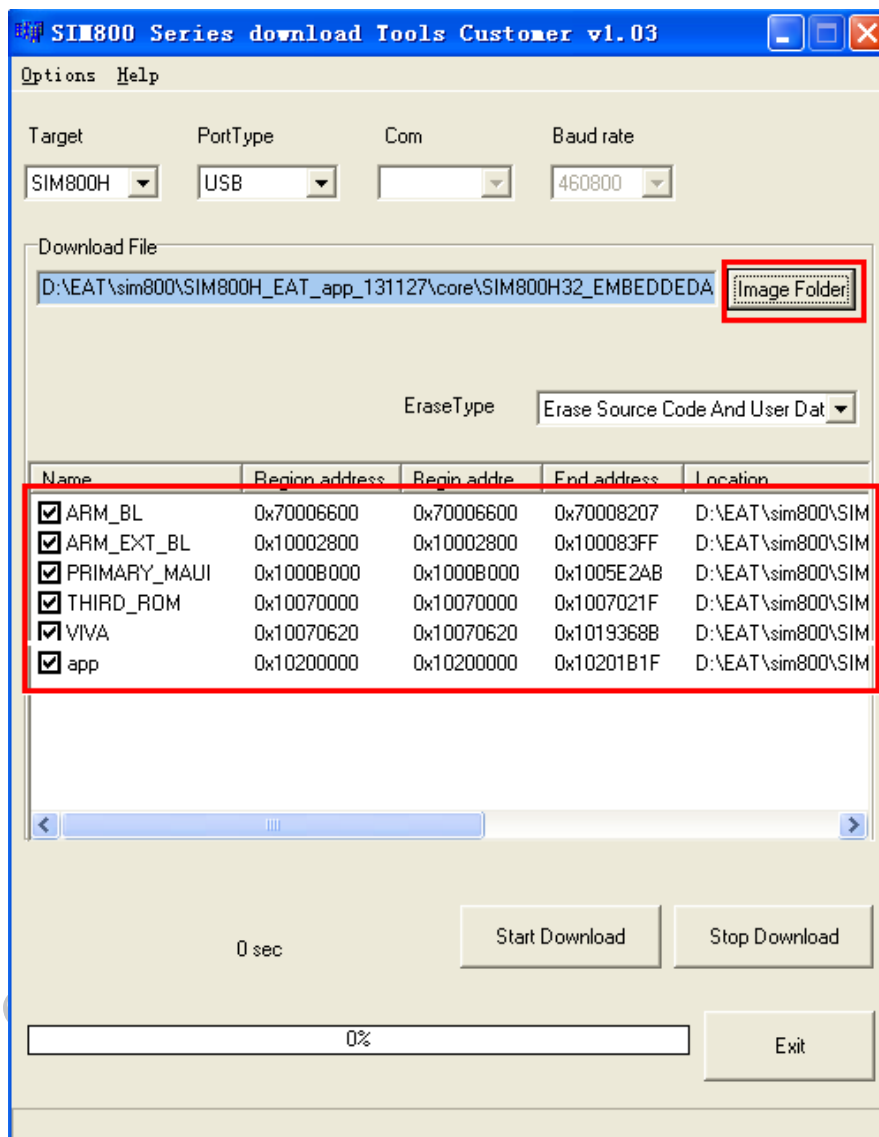


Figure 2

1. If you have developed EAT APP, it will produce two files (.cfg) in EAT FW folder (for example: **1308B01SIM800H32_EAT_only_core.cfg** and **SIM800H32_EAT.cfg**)
2. If you choose **SIM800H32_EAT.cfg**, you will update core file and APP file. As shown in the figure2

3. If you choose **1308B01SIM800H32_EAT_only_core.cfg**, you will only update core file.

Note: if you just need to download the app file, just choose the app file, and leave the other five files alone;(figure3)

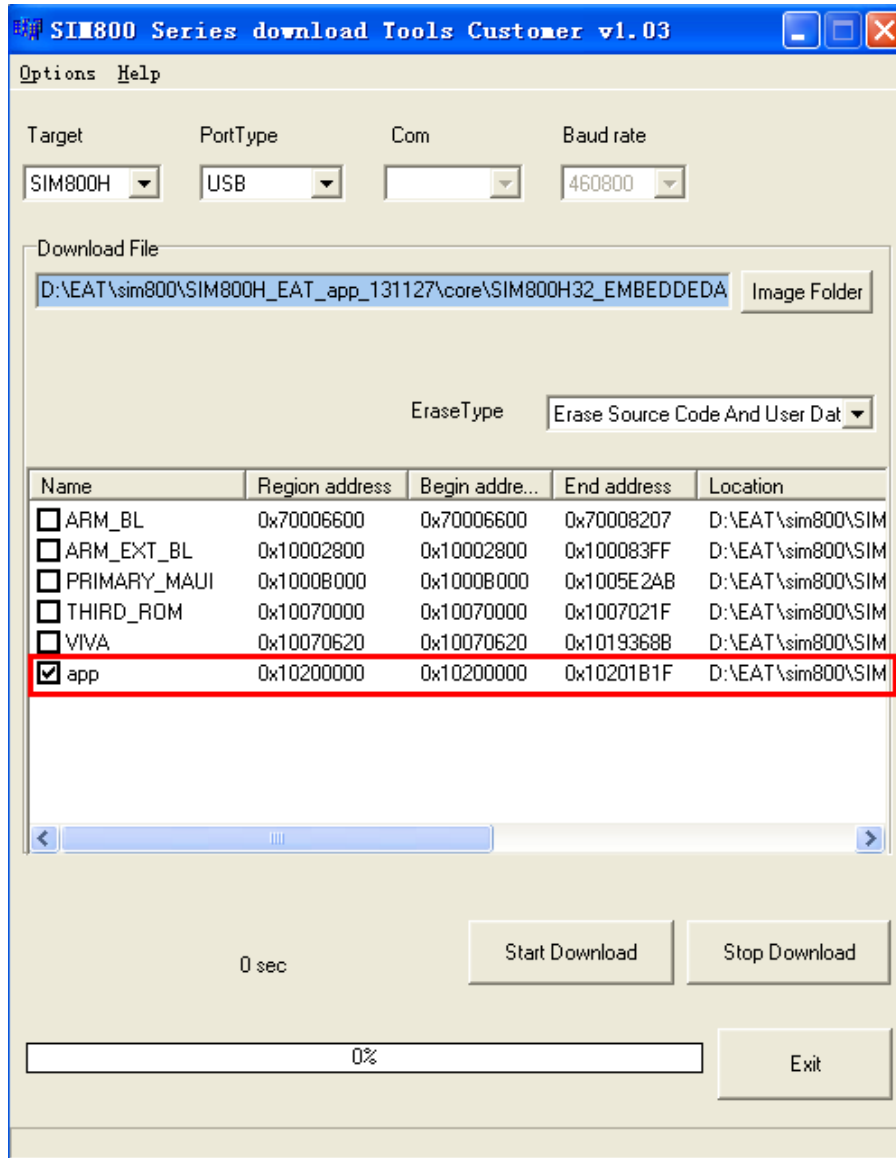


Figure 3

1.4 Start download

(1) Turn on the **download** key .If you do not have this download key in your own developed board, pull the power key low (**to GND**) all the time during downloading.

(2) Click “**Start Download**”, and then switch the “**POWER**” key to **ON** (power on the module). ➡ (As shown in the figure 4)

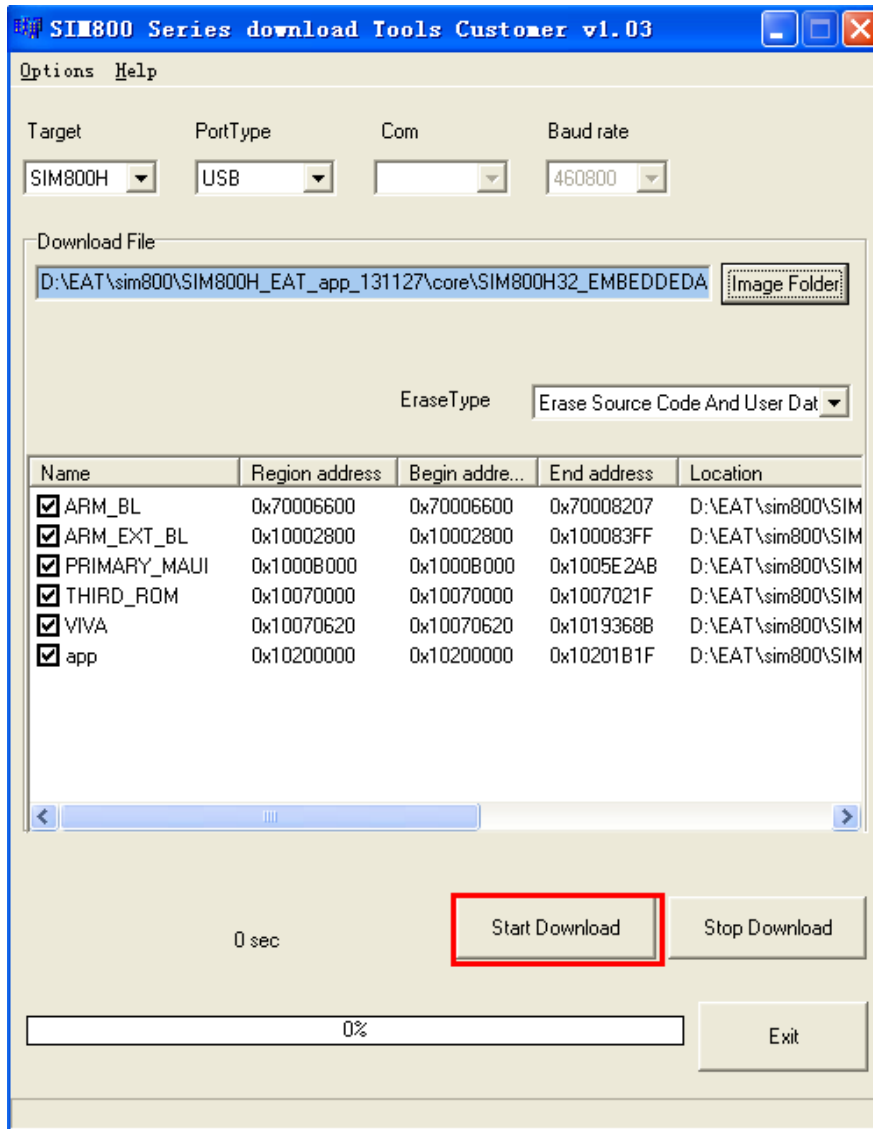


Figure 4

(3) Waiting for until the tool shows “**FR OK**”, and then you can exit the tool and the FW has been upgraded successfully.

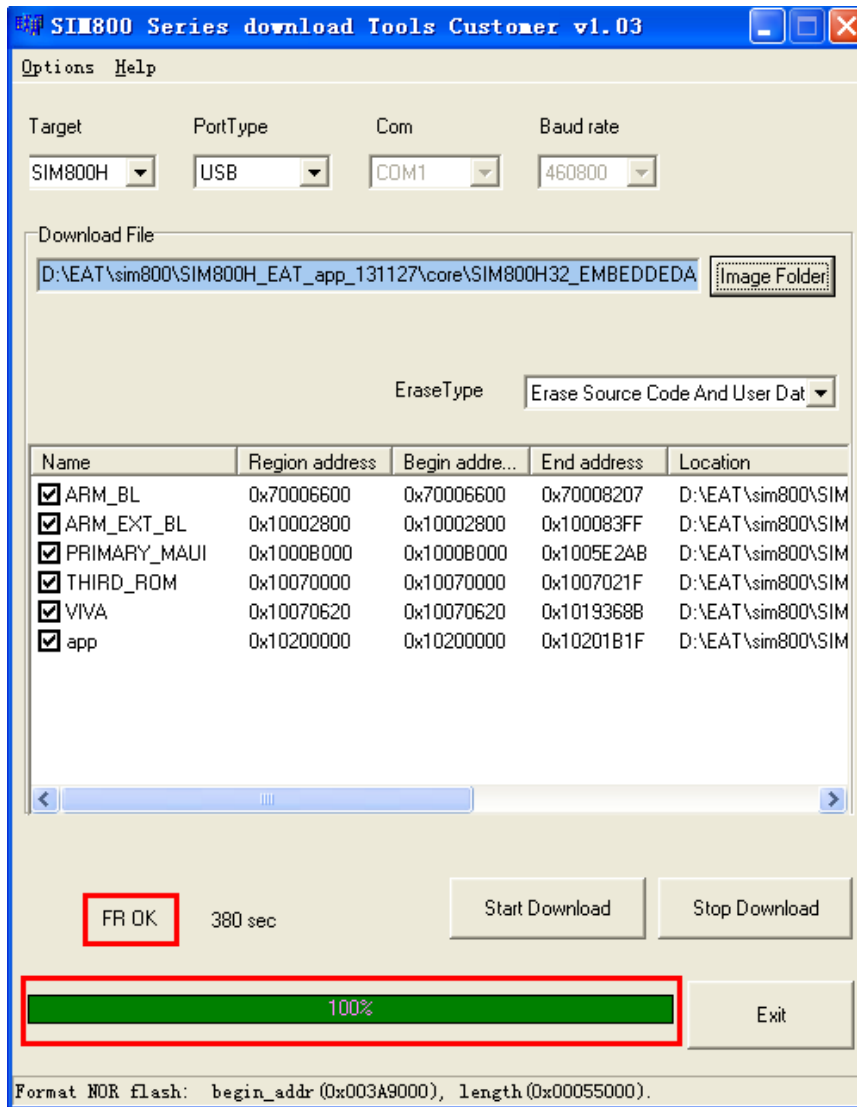


Figure 5

2 UART download

2.1 Preparation

1. If you upgrade module FW using SIM800H EVB board, connect the main Serial port or debug port to your computer by **USB** cable. Insert the power DC.
2. Install USB Driver” MTK_USB_DRIVER”.

2.2 Download Tool Setting:

Double click () to open the download tool; you can see the interface as below:

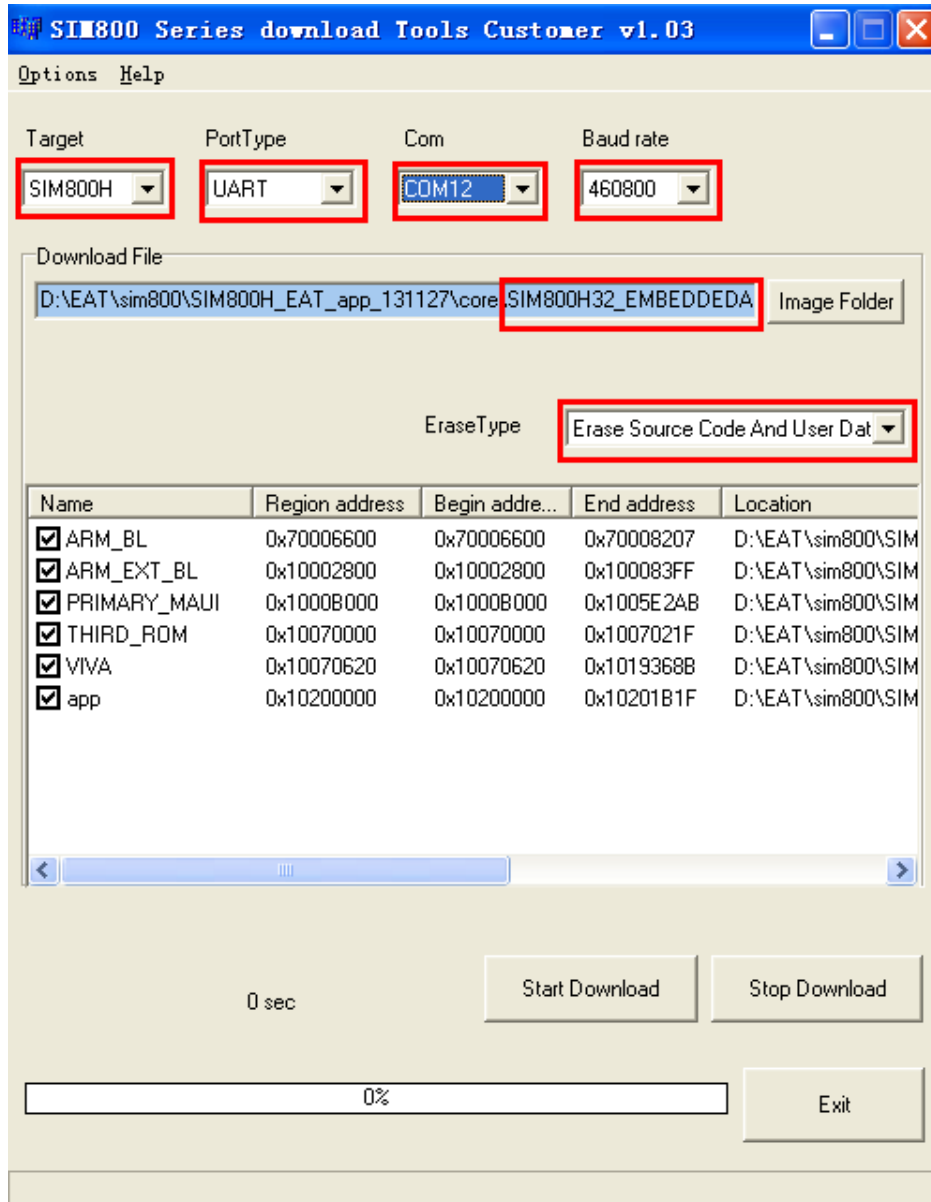


Figure 6

Note: if you use win7 system, please run this software as administrator. As shown in figure7.

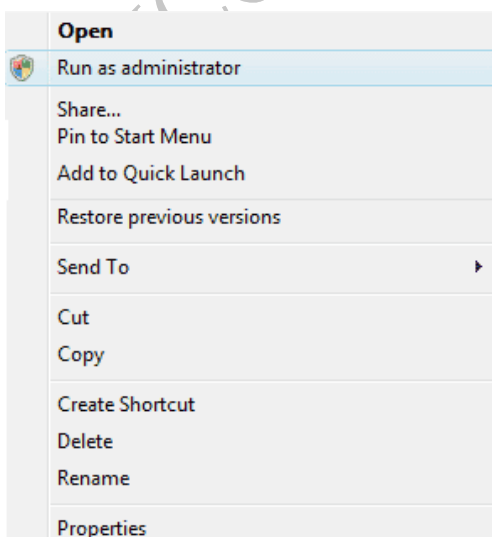


Figure 7

Target : module identification;

PortType: please choose UART download;

Com: the serial port you use;

Baud rate: default is 460800.

Erase Type: please choose Erase source code and user data (default).

2.3 Image Folder

The main difference between standard and EAT version is that EAT version has two kinds of software package. One is only core file; another one with core file and app file;

4. Confirm compiler FW path. If it is not default path, click the “**Image Folder**” and navigate to the correct FW path where the where the FW file (.cfg) is in.

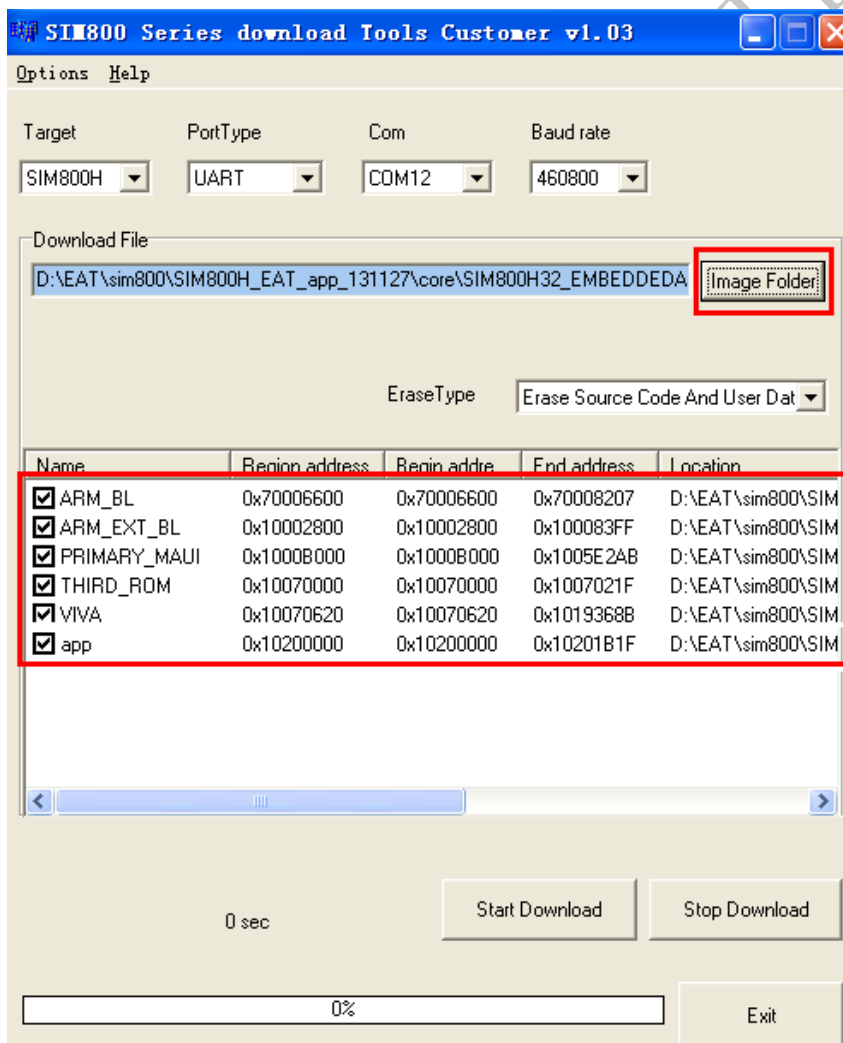


Figure 8

5. If you have developed EAT APP, it will produce two files (.cfg) in EAT FW folder (for

example: **1308B01SIM800H32_EAT_only_core.cfg** and **SIM800H32_EAT.cfg**)

6. If you choose **SIM800H32_EAT.cfg**, you will update core file and APP file. As shown in the figure8
7. If you choose **1308B01SIM800H32_EAT_only_core.cfg**, you will only update core file.

Note: if you just need to download the app file, just choose the app file, and leave the other five files alone;

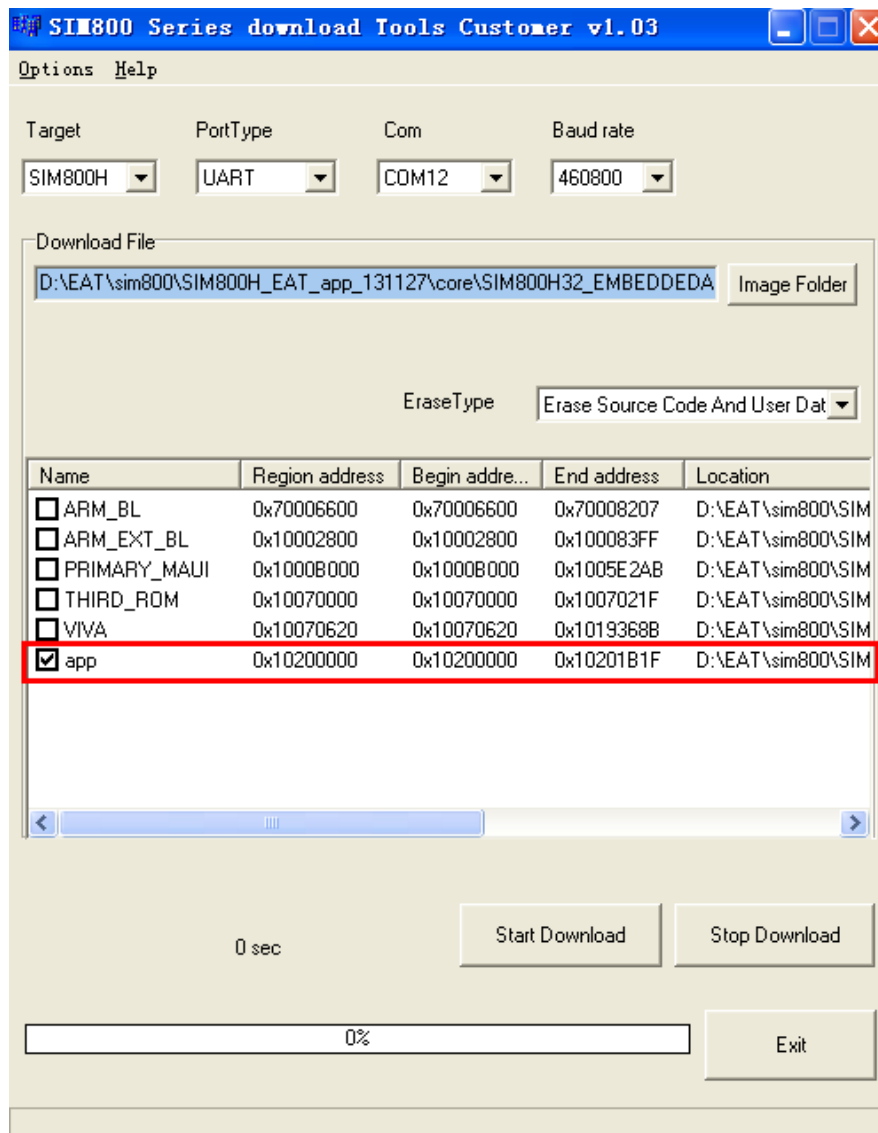


Figure 9

2.4 Start download

- (1) Turn on the **download** key .If you do not have this download key of your own developed board, pull the **power key low (to GND)** all the time during downloading.

(2) Click “**Start Download**”, and then switch the “POWER” key to ON (**power on the module**). → FW download is starting.

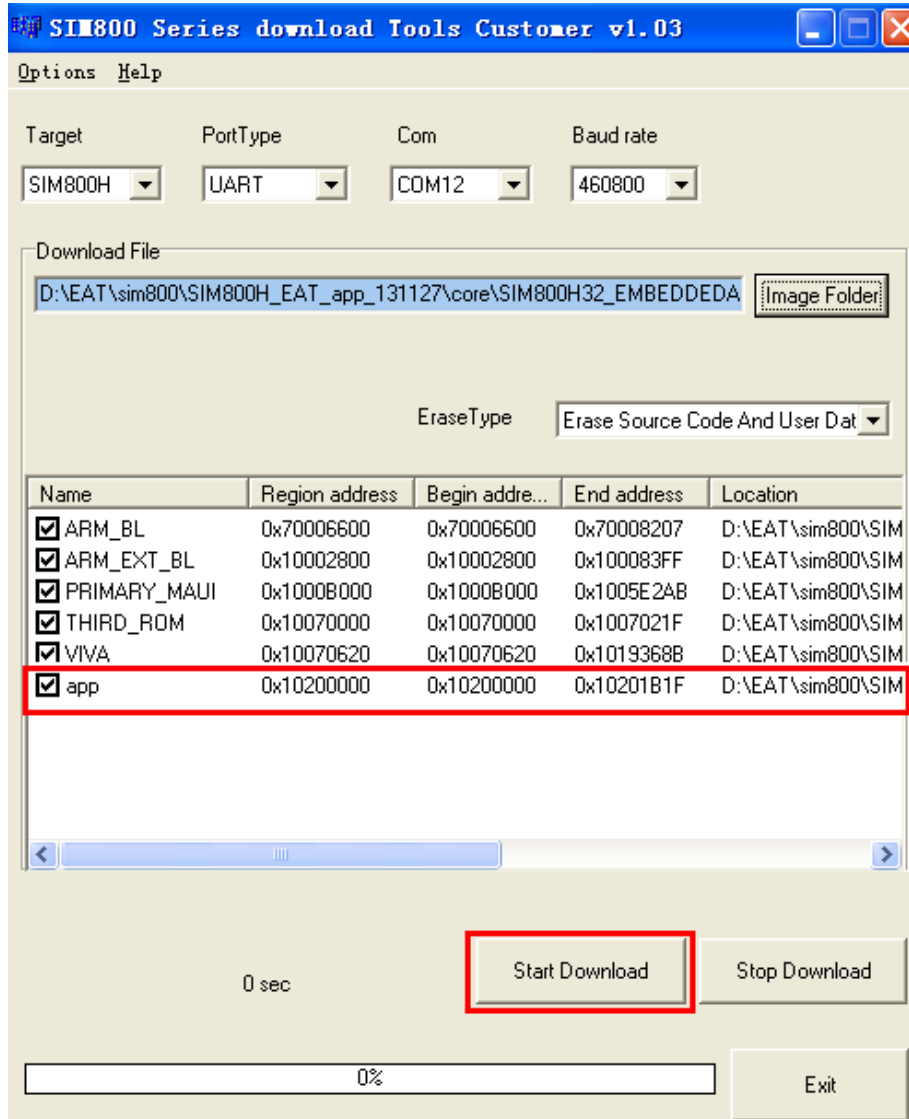


Figure 10

(3) Waiting for until the tool shows “**FR OK**” (Figure 11), and then you can exit the tool and the FW has been upgraded successfully.

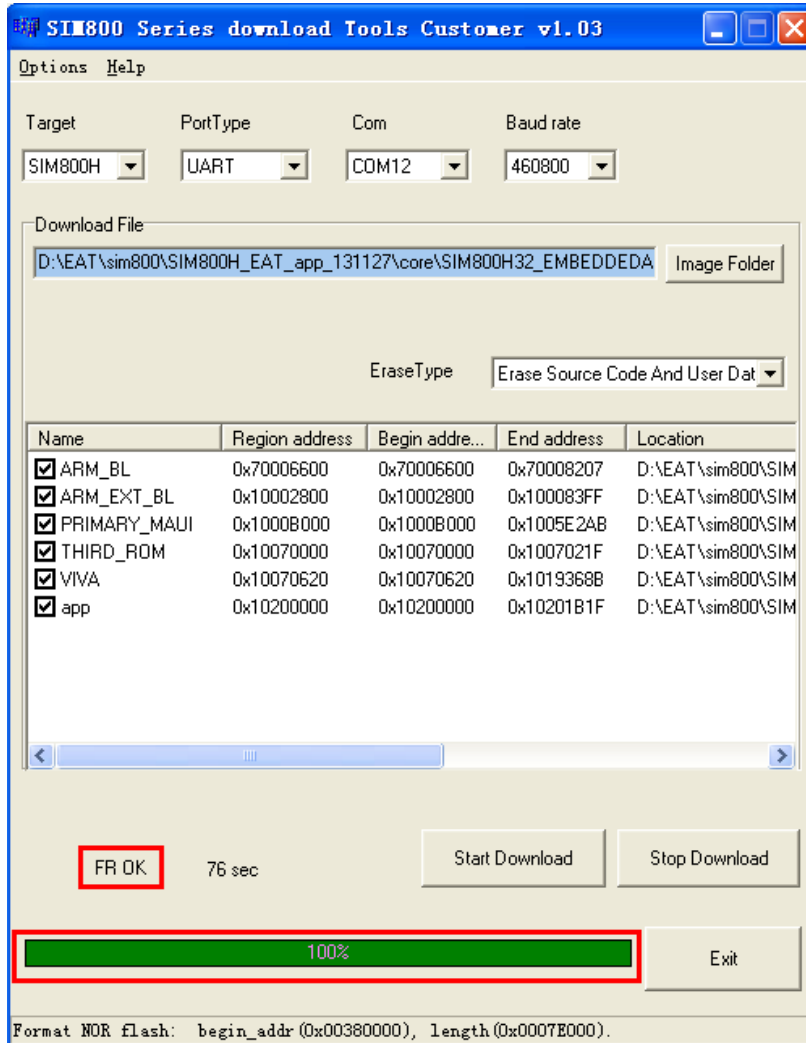


Figure 11

If you still have any question, please contact with SIMCom FAE team directly. Thanks.